

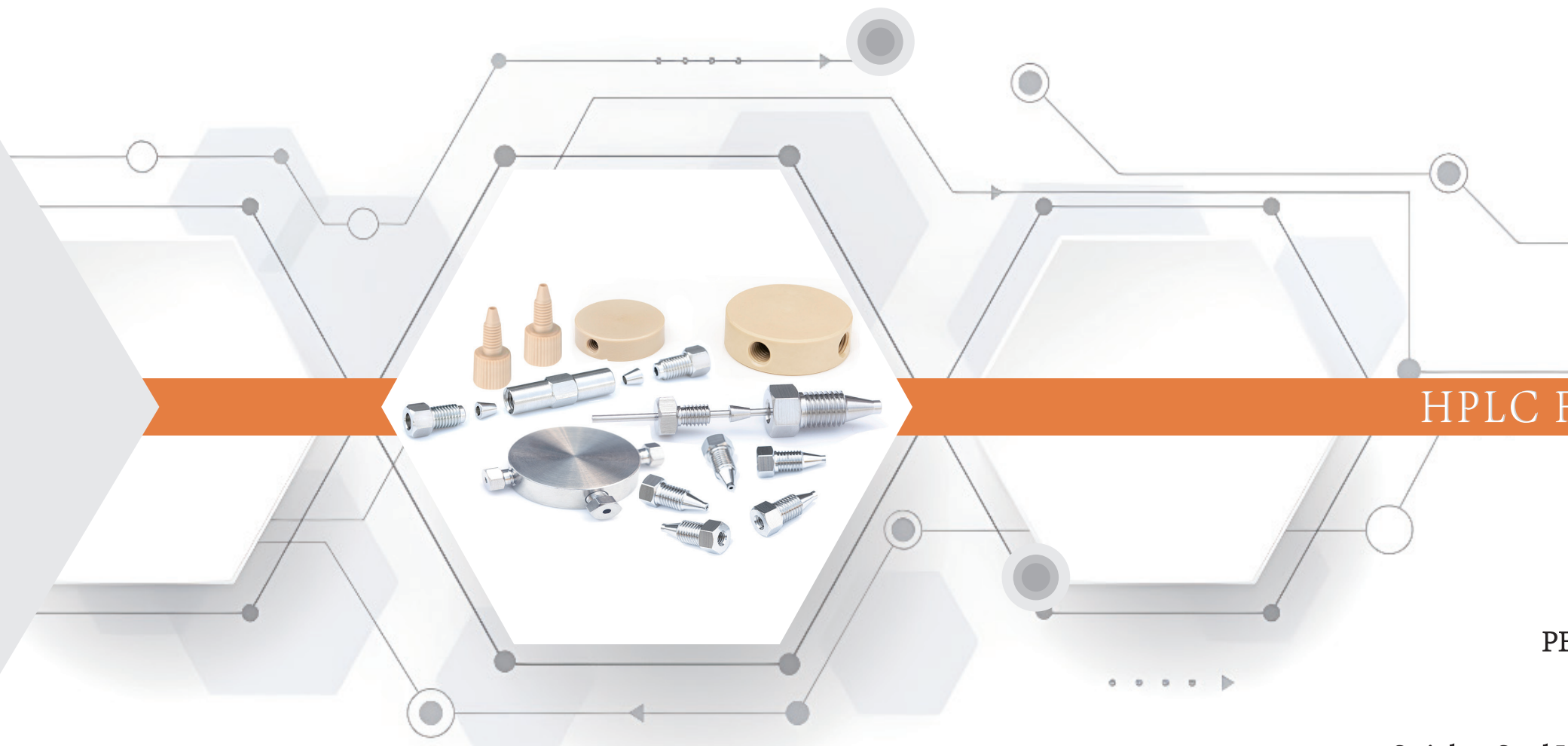


Replete Technology Co., Ltd

Adress:Royal Haitzu Tonan #8028-1-12
Nishikamata,Ota-ku,Tokyo,Japan
TEL:03-4362-0167

DaLian Replete Science And Technology Co.,Ltd

Adress: 1-9, No. 590 Southwest Road, Shahekou
District, Dalian City, Liaoning
Province, China
TEL: +86 0411-83786041



HPLC Fitting

PEEK Fitting

Stainless Steel Unions

Polymeric Fittings – High Pressure

PEEK Head Fittings

- Ideal for use with PEEK tubing
- Withstand pressures up to 350 bar (5000 psi)
- For any high pressure fittings

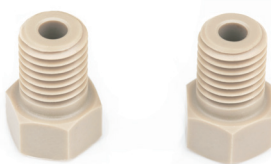
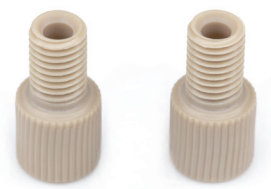
PEEK One-Piece Head Fittings

Part No.	Description	Qty/Pkg	drawing
RE-1601-5	Fitting, PEEK 1/16", 10-32 large round head, one-piece	5	A
RE-1602-5	Fitting, PEEK 1/16", 10-32 small round head, one-piece	5	B
RE-1603-5	Fitting, PEEK 1/16", 10-32 flat head, one-piece	5	C
RE-3101-5	Fitting, PEEK 1/8", 5/16-24 round head, one-piece	5	D



PEEK Nuts with Single Ferrules

Part No.	Description	Qty/Pkg
RE-1604-5	NUT, PEEK 1/16", 10-32 round head	5
RE-1064R-5	Ferrules, PEEK, 1/16"	5
RE-1605-5	NUT, PEEK 1/16", 10-32 round head	5
RE-1605R-5	Ferrules, PEEK, double 1/16"	5
RE-3102-5	NUT, PEEK 1/8", 5/16-24 hex-head	5
RE-3102R-5	Ferrules, PEEK, 1/8"	5



PEEK Adapters

Part No.	Description	Qty/Pkg
RE-1631-5	Adapters, PEEK 1/16" - 1/8" inlet 10-32 Female - outlet 5/16-24 Male	5



Parameter:

- Material: PEEK
- Screw thread: OD 1/16" 10-32 OD 1/8" 5/16-24
- Dimensions: OD 1/16 "or OD 1/8" line
- Pressure rating: <350 bar (<5000psi)

Polymeric Fittings – High Pressure

HPLC 50 Online Filter

- For 1/16" and 1/8" OD SS tubing
- Low dead volume
- High pressure

Stainless Steel Tees & Crosses are circular structure design, high nuts fit and best pressure resistance, can be widely made for joining high-pressure lines connection in HPLC systems.

They are precision machined with a focus on the concentricity of the bore as well as on the finish of the surfaces to give an absolute leak free connection.

Internal threads make stronger connections and internal fitting details provide the lowest dead volume for high performance instrumentation.

Parameter:

- Material: SS316L
- Screw thread: OD 1/16" 10-32 OD 1/8" 5/16-24
- Dimensions: OD 1/16 "or OD 1/8" line
- Pressure rating: <1200 bar (<17000psi)

Stainless Steel Tees High Pressure

Part No.	Description
RE-SS1637	Tee, SS 1/16", 0.50mm bore complete with one piece fittings
RE-SS3134	Tee, SS 1/8", 0.75mm bore complete with one piece fittings

(Note: All above SS Unions complete with nuts and ferrules.)

Stainless Steel Crosses High Pressure

Part No.	Description
RE-Z1638	Cross, SS 1/16", 0.50mm bore complete with one piece fittings
RE-Z3135	Cross, SS 1/8", 0.75mm bore complete with one piece fittings



Polymeric Fittings – High Pressure

Stainless Steel Unions

- For 1/16” and 1/8” OD SS tubing
- Low dead volume
- High pressure

Stainless Steel Unions are made for joining two pieces of 1/16” OD tubing or 1/8” with 1/16” OD tubing. They are precision machined with a focus on the concentricity of the bore as well as on the finish of the surfaces to give an absolute leak-free connection.

Internal threads make stronger connections and internal fitting details provide the lowest dead volume for high performance instrumentation.

Stainless Steel Unions

Part No.	Description
RE-SS1610	Union, SS 1/16”, 10-32, 0.50mm bore, large hex-head, complete
RE-SS1611	Union, SS 1/16”, 10-32, 0.50mm bore, small hex-head, complete
RE-SS3106	Union, SS 1/8”, 5/16-24, 0.75mm bore, complete

Stainless Steel Reducing Union

Part No.	Description	Qty/Pkg
RE-SS1632	Union, SS 1/16”, ruducing 0.50mm bore, 1/16” to 1/8”, 10-32 - 5/16-24, complete	5

(Note: All above SS Unions complete with nuts and ferrules.)

Spare Parts

Part No.	Description	Qty/Pkg
RE-1607-5	Nut, SS 1/16”, 10-32 Small hex-head	5
RE-1608-5	Nut, SS 1/16”, 10-32 Large hex-head	5
RE-1609-5	Ferrules, SS 1/16”	5
RE-3104-5	Nut, SS 1/8”, 5/16-24 hex-head	5
RE-3105-5	Ferrules, SS 1/8”	5

Parameter:

- Material: SS316L
- Screw thread: OD 1/16" 10-32
OD 1/8" 5/16-24
- Dimensions: OD 1/16 "or OD 1/8" line
- Pressure rating: <1200 bar (<17000psi)



Parameter:

- Material: PEEK
- Screw thread: OD 1/16" 10-32
OD 1/8" 5/16-24
- Dimensions: OD 1/16 "or OD 1/8" line
- Pressure rating: <350 bar (<5000psi)



Polymeric Fittings – High Pressure

PEEK Unions

- Low dead volume
- Completely inert and biocompatible

PEEK unions are directly through,tees and crosses,and can be used in conjunction with the most common one-any material line (stainless steel, PEEK, PTFE, etc.).

PEEK Unions

Part No.	Description
RE-Z1606	Union, PEEK 1/16” ,0.50mm bore complete
RE-Z160	Union, PEEK 1/16” ,0.50mm bore body
RE-Z3103	Union, PEEK 1/8” ,0.50mm bore complete
RE-Z310	Union, PEEK 1/8” ,0.50mm bore body

Spare Parts

Part No.	Description	Qty/Pkg
RE-1602-5	Fitting, PEEK 1/16”, 10-32 small round head, one-piece	5
RE-1603-5	Fitting, PEEK 1/16”, 10-32 flat head, one-piece	5
RE-3101-5	Fitting, PEEK 1/8”, 5/16-24 round head, one-piece	5

PEEK Reducing Union

Part No.	Description
RE-Z1631	Union, PEEK, ruducing 0.50mm bore, 1/16” to 1/8”, complete
RE-Z163	Union, PEEK, ruducing,0.50mm bore, 1/16” to 1/8” body

Spare Parts

Part No.	Description	Qty/Pkg
RE-1602-5	Fitting, PEEK 1/16”, 10-32 small round head, one-piece	5
RE-3101-5	Fitting, PEEK 1/8”, 5/6-24 round head, one-piece	5

Polymeric Fittings – High Pressure

PEEK Tees, Crosses High Pressure

PEEK Tees High Pressure

Part No.	Description
RE-Z1636	Tee, PEEK 1/16", 0.50mm bore complete with one piece fittings
RE-Z163	Tee, PEEK 1/16", 0.50mm bore body only
RE-Z3133	Tee, PEEK 1/8", 0.50mm bore complete with one piece fittings
RE-Z313	Tee, PEEK 1/8", 0.50mm bore body only

PEEK Crosses High Pressure

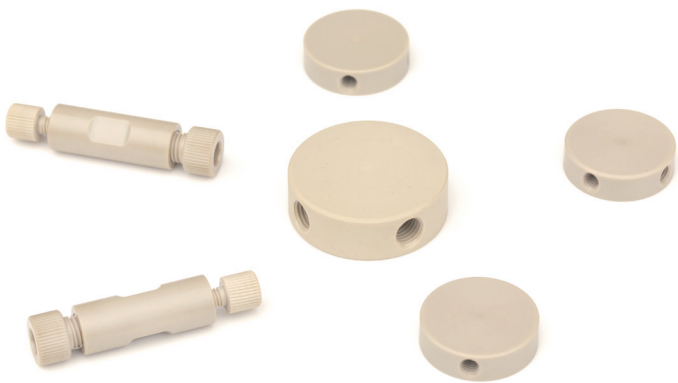
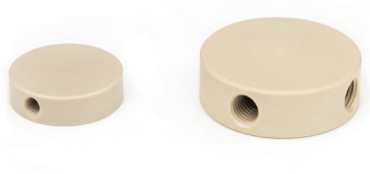
Part No.	Description
RE-Z1636	Cross, PEEK 1/16", 0.50mm bore complete with one piece fittings
RE-Z163	Cross, PEEK 1/16", 0.50mm bore body only
RE-Z3133	Cross, PEEK 1/8", 0.50mm bore complete with one piece fittings
RE-Z313	Cross, PEEK 1/8", 0.50mm bore body only

Spare Parts

Part No.	Description	Qty/Pkg
RE-1602-5	Fitting, PEEK 1/16", 10-32 small round head, one-piece	5
RE-3101-5	Fitting, PEEK 1/8", 5/6-24 round head, one-piece	5

Parameter:

- Material: PEEK
- Screw thread: OD 1/16" 10-32
OD 1/8" 5/16-24
- Dimensions: OD 1/16 "or OD 1/8" line
- Pressure rating: <350 bar (<5000psi)



Polymeric Fittings – High Pressure

Stainless Steel Nuts and Ferrules High pressure

- For 1/16" and 1/8" OD SS tubing
- Low dead volume
- High pressure

Stainless steel nuts and ferrules have high fit and good pressure resistance, and can be widely used for connecting high-pressure pipelines such as detectors and chromatography columns in HPLC systems.

Stainless Steel Nuts and Ferrules

Part No.	Description	Qty/Pkg
RE-1607-5	Nut, SS 1/16", 10-32 Small hex-head	5
RE-1608-5	Nut, SS 1/16", 10-32 Large hex-head	5
RE-1609-5	Ferrules, SS 1/16"	5
RE-3104-5	Nut, SS 1/8", 5/16-24 hex-head	5
RE-3105-5	Ferrules, SS 1/8"	5

Stainless Steel Adapters

Part No.	Description	Qty/Pkg
RE-1631-5	Adapters, SS 1/16" – 1/8" inlet 10-32 Female – outlet 5/16-24 Male	5

Parameter:

- Material: SS316L
- Screw thread: OD 1/16" 10-32
OD 1/8" 5/16-24
- Dimensions: OD 1/16 "or OD 1/8" line
- Pressure rating: <500 bar (<7250psi)

