



Replete Technology Co., Ltd

Address: Royal Haitzu Tonan #8028-1-12  
Nishikamata, Ota-ku, Tokyo, Japan  
TEL: 03-4362-0167

Dalian Replete Science And Technology Co., Ltd

Address: 1-9, No. 590 Southwest Road, Shahekou  
District, Dalian City, Liaoning  
Province, China

TEL: +86 0411-83786041



## Column Tube for Chromatography

PEEK Tubing

Stainless Steel Tubing

PTFE Tubing

FEP Tubing

PEEK Tubing

All PEEK tubing has Premium Grade tolerances e.g.1/16" +/-0.001"

- Tiahter tolerances
- Easy to cut
- Biocompatible

PEEK material can withstand almost any chemical except for concetrated sulfuric acid, and even at high temperatures, it can maintain good chemical stability.

PEEK tubes have the strength required for continuous use under HPLC pressure and will not expand or burst.

The dense polymer structure of PEEK tubes eliminates the permeability of organic solvents, which can cause other polymer tubes (such as ETFE) to sweat. PEEK tubes can effectively prevent such situations from occurring.

PEEK pipes can withstand the erosion of halogenated salts, strong buffering liquids, and ighly active mobile phases, while stainless steel pipes often cannot withstand such working conditions.

OD	ID	Bar	psi
1/16"	0.050mm	434	6300
	0.064mm	434	6300
	0.075mm	428	6200
	0.100mm	420	6100
	0.13mm	420	6100
	0.18mm	400	5800
	0.25mm	386	5600
	0.50mm	310	4500
	0.75mm	240	3500
	1.00mm	165	2400
	1.40mm	52	750



SPECS:

Material

PEEK

Dimensions:

OD and ID, see chart

Tolerances:

+/-0.025mm  
on OD and ID

Pressure rating:

See chart

Max recommended  
working temp:

< 100°C

Suitable for pipelines with  
OD 1/16" and ID<0.75mm

Spares and tools:

Specialized pipe cutting  
tools can used for clean  
and burr free vertical  
cutting.

SPECS:

Material

FTFE

Dimensions:

OD and ID, see chart

Tolerances:

OD: +/-0.02mm  
ID: +/-0.02mm

Pressure rating:

According todifferent pipe  
diameters and wall thickne-  
sses, the maximum pressure  
resistance is 0.7Mpa (100psi).

Operating temperature:

From-180°Cto + 260°C



PTFE OD 6mm

Part No.	ID	Qty/pkg
RE-PT6040-3M	4mm	3m
RE-PT6040-5M	4mm	5m
RE-PT6040-10M	4mm	10m
RE-PT6040-25M	4mm	25m

PTFE OD 1/4"

Part No.	ID	Qty/pkg
RE-PT6343-3M	4.35mm	3m
RE-PT6343-5M	4.35mm	5m
RE-PT6343-10M	4.35mm	10m
RE-PT6343-25M	4.35mm	25m

Stainless steel cutter

- Suitable for stainless steel pipelines with OD 1/16 "and 1/8"
- The blades are smooth and evenly cut.
- Easy replacement of cutting wheel.

Stainless steel cutter

Part No.	Description
RE-SS131	Used for cutting 1/16 "and 1/8" stainless steel pipelines
RE-SS1311	Replace the cutting wheel

Stainless steel cutter

- Suitable for stainless steel pipelines with OD 1/16 "
- Simple and fast cutting.

Stainless steel cutter

Part No.	Description
RE-SS132	Used for cutting 1/16 "stainless steel pipelines

PTFE OD 1/16"

Part No.	ID	Qty/pkg
RE-PT1605-3M	0.5mm	3m
RE-PT1605-5M	0.5mm	5m
RE-PT1605-10M	0.5mm	10m
RE-PT1605-25M	0.5mm	25m
RE-PT1608-3M	0.8mm	3m
RE-PT1608-5M	0.8mm	5m
RE-PT1608-10M	0.8mm	10m
RE-PT1608-25M	0.8mm	25m
RE-PT1610-3M	1.0mm	3m
RE-PT1610-5M	1.0mm	5m
RE-PT1610-10M	1.0mm	10m
RE-PT1610-25M	1.0mm	25m

PTFE OD 2mm

Part No.	ID	Qty/pkg
RE-PT2010-3M	1.0mm	3m
RE-PT2010-5M	1.0mm	5m
RE-PT2010-10M	1.0mm	10m
RE-PT2010-25M	1.0mm	25m
RE-PT2012-3M	1.2mm	3m
RE-PT2012-5M	1.2mm	5m
RE-PT2012-10M	1.2mm	10m
RE-PT2012-25M	1.2mm	25m

PTFE OD 3mm

Part No.	ID	Qty/pkg
RE-PT3012-3M	1.2mm	3m
RE-PT3012-5M	1.2mm	5m
RE-PT3012-10M	1.2mm	10m
RE-PT3012-25M	1.2mm	25m
RE-PT3020-3M	2.0mm	3m
RE-PT3020-5M	2.0mm	5m
RE-PT3020-10M	2.0mm	10m
RE-PT3020-25M	2.0mm	25m

PTFE OD 1/8"

Part No.	ID	Qty/pkg
RE-PT3116-3M	1.6mm	3m
RE-PT3116-5M	1.6mm	5m
RE-PT3116-10M	1.6mm	10m
RE-PT3116-25M	1.6mm	25m

SPECS:

Material

FTFE

Dimensions:

OD and ID, see chart

Tolerances:

OD: +/-0.02mm

ID: +/-0.02mm

Pressure rating:

According to different pipe diameters and wall thicknesses, the maximum pressure resistance is 0.7Mpa (100psi).

Operating temperature:

From -180°C to +260°C

SPECS:

Material

PEEK

Dimensions:

OD and ID, see chart

Tolerances:

+/-0.025mm

on OD and ID

Pressure rating:

See chart

Max recommended working temp:

< 100°C

Suitable for pipelines with OD 1/16" and ID < 0.75mm

Spares and tools:

Specialized pipe cutting tools can be used for clean and burr-free vertical cutting.

PEEK Tubing-1/16" OD

Part No.	ID (mm)	Qty/pkg
RE-T-0050-M3	0.05	3m
RE-T-0050-M5	0.05	5m
RE-T-0050-M10	0.05	10m
RE-T-0050-M25	0.05	25m
RE-T-0064-M3	0.064	3m
RE-T-0064-M5	0.064	5m
RE-T-0064-M10	0.064	10m
RE-T-0064-M25	0.064	25m
RE-T-0075-M3	0.075	3m
RE-T-0075-M5	0.075	5m
RE-T-0075-M10	0.075	10m
RE-T-0075-M25	0.075	25m
RE-T-0100-M3	0.1	3m
RE-T-0100-M5	0.1	5m
RE-T-0100-M10	0.1	10m
RE-T-0100-M25	0.1	25m
RE-T-0130-M3	0.13	3m
RE-T-0130-M5	0.13	5m
RE-T-0130-M10	0.13	10m
RE-T-0130-M25	0.13	25m
RE-T-0180-M3	0.18	3m
RE-T-0180-M5	0.18	5m
RE-T-0180-M10	0.18	10m
RE-T-0180-M25	0.18	25m
RE-T-0250-M3	0.25	3m
RE-T-0250-M5	0.25	5m
RE-T-0250-M10	0.25	10m
RE-T-0250-M25	0.25	25m
RE-T-0500-M3	0.5	3m
RE-T-0500-M5	0.5	5m
RE-T-0500-M10	0.5	10m
RE-T-0500-M25	0.5	25m
RE-T-0750-M3	0.75	3m
RE-T-0750-M5	0.75	5m
RE-T-0750-M10	0.75	10m
RE-T-0750-M25	0.75	25m
RE-T-1000-M3	1	3m
RE-T-1000-M5	1	5m
RE-T-1000-M10	1	10m
RE-T-1000-M25	1	25m
RE-T-1400-M3	1.4	3m
RE-T-1400-M5	1.4	5m
RE-T-1400-M10	1.4	10m
RE-T-1400-M25	1.4	25m

- Variety of sizes for HPLC and GC applications
- Smooth internal surface
- Soft annealed OD for easy ferrule connections

High quality stainless steel pipeline OD 1 / 16"

Part No.	ID(mm)	Qty/pkg
RE-SS125-M3	0.13	3m
RE-SS125-M5	0.13	5m
RE-SS125-M10	0.13	10m
RE-SS126-M3	0.18	3m
RE-SS126-M5	0.18	5m
RE-SS126-M10	0.18	10m
RE-SS127-M3	0.25	3m
RE-SS127-M5	0.25	5m
RE-SS127-M10	0.25	10m
RE-SS128-M3	0.5	3m
RE-SS128-M5	0.5	5m
RE-SS128-M10	0.5	10m
RE-SS129-M3	0.75	3m
RE-SS129-M5	0.75	5m
RE-SS129-M10	0.75	10m
RE-SS130-M3	1	3m
RE-SS130-M5	1	5m
RE-SS130-M10	1	10m

SPECS:

Material

SS316L

Dimensions:

OD and ID, see chart

Tolerances:

OD: +/-0.05mm

ID: +/-0.025mm

Pressure rating:

OD:1/16" 365bar(5300psi)

Attention:

The inner diameter size(mm) is converted from inches.



SPECS:

Material

PTFE

Dimensions:

OD and ID, see chart

Tolerances:

OD: +/-0.02mm

ID: +/-0.02mm

Pressure rating:

According to different pipe diameters and wall thicknesses, the maximum pressure resistance is 0.7Mpa (100psi).

Operating temperature:

From -180°C to +260°C

FTFE Tubing

- Milky white semi transparent.
- Non toxic, impurity free, high and low temperature resistant, non adhesive.
- Good chemical stability, corrosion resistance, inert to most chemicals and solvents, capable of withstanding strong acids, alkalis, water, and various organic solvents.
- The surface is very smooth and the friction coefficient is extremely low.

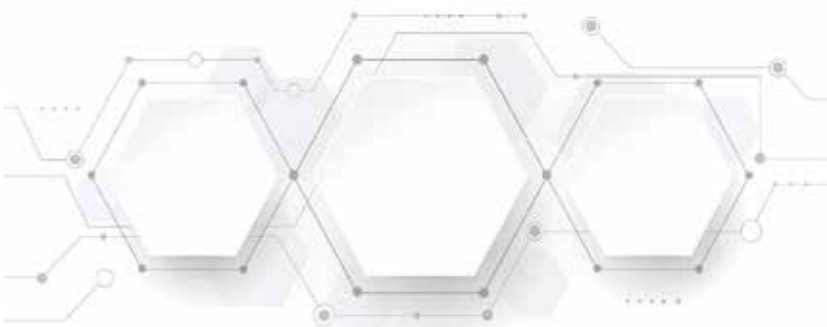
PTFE, also known as polytetrafluoroethylene or Teflon, is a high molecular weight polymer synthesized by polymerizing tetrafluoroethylene as a monomer. It has excellent heat and cold resistance and can be used for a long time at -180 to 260 °C.

This material has the characteristics of acid and alkali resistance, resistance to various organic solvents, and is insoluble in any solvent.

Apart from being able to react with molten alkali metals, it is not corroded by any substance, and even when boiled in hydrofluoric acid, aqua regia, fuming sulfuric acid, or sodium hydroxide,

规格参数

OD	ID	bar	psi
1.6mm	0.5mm	48	700
	0.8mm	37	550
	1.0mm	25	350
2mm	1.0mm	25	350
	1.2mm	25	350
3mm	1.2mm	35	500
	2.0mm	41	600
1/8"	1.6mm	35	500
	2.1mm	41	600
6mm	4mm	17	250
1/4"	4.35mm	17	250



FEP Tubing

FEP OD 1/8"

Part No.	ID	Qty/pkg
RE-F3116-3M	1.6mm	3m
RE-F3116-5M	1.6mm	5m
RE-F3116-10M	1.6mm	10m
RE-F3116-25M	1.6mm	25m

FEP OD 6mm

Part No.	ID	Qty/pkg
RE-F6040-3M	4mm	3m
RE-F6040-5M	4mm	5m
RE-F6040-10M	4mm	10m
RE-F6040-25M	4mm	25m

FEP OD 1/4"

Part No.	ID	Qty/pkg
RE-F6343-3M	4.35mm	3m
RE-F6343-5M	4.35mm	5m
RE-F6343-10M	4.35mm	10m
RE-F6343-25M	4.35mm	25m

SPECS:

Material  
FEP

Dimensions:  
OD and ID, see chart

Tolerances:  
OD: +/-0.02mm  
ID: +/-0.02mm

Pressure rating:

According to different pipe diameters and wall thicknesses, the maximum pressure resistance is 0.7Mpa (100psi).

Operating temperature:

From -85°C to +200°C

SPECS:

Material  
SS316L

Dimensions:  
OD and ID, see chart

Tolerances

OD 1/16"  
OD: +/-0.05mm (0.002")  
ID: +/-0.025mm (0.001")

Pressure rating:  
OD: 1/16" 365bar (5300psi)

Attention:

The inner diameter size (mm) is converted from inches

Pre-cut Stainless Steel Tubing

- For zero dead volume connections
- Ready to use
- Cleaned
- Soft annealed OD for easy ferrule connections

Pre-cut Stainless Steel Tubing

Part No.	ID(mm)	color	Length(mm)
RE-SS12505	0.13	red	50
RE-SS12510	0.13	red	100
RE-SS12520	0.13	red	200
RE-SS12530	0.13	red	300
RE-SS12605	0.18	yellow	50
RE-SS12610	0.18	yellow	100
RE-SS12620	0.18	yellow	200
RE-SS12630	0.18	yellow	300
RE-SS12705	0.25	blue	50
RE-SS12710	0.25	blue	100
RE-SS12720	0.25	blue	200
RE-SS12730	0.25	blue	300
RE-SS12805	0.5	black	50
RE-SS12810	0.5	black	100
RE-SS12820	0.5	black	200
RE-SS12830	0.5	black	300
RE-SS71285	0.75	green	50
RE-SS12910	0.75	green	100
RE-SS12920	0.75	green	200
RE-SS12930	0.75	green	300

FEP Tubing

- White transparent
- High transparency, no impurities, high and low temperature resistance, non-adhesion.
- Resistance to strong acid, strong alkali, organic solvents and oxidant erosion, with excellent chemical stability.
- The surface is very smooth, with an extremely low coefficient of friction

FEP full name Fluorinated ethylene propylene, fluoroethylene propylene copolymer.

FEP has chemical stability, similar to PTFE, with excellent chemical stability. Except for reactions with fluorine, molten alkali metal and chlorine trifluoride at high temperature, it is not corroded in contact with other chemicals.

FEP pipelines are often used for medium and low pressure connection pipelines, such as HPLC flow phase inlet pipes, or medium and low pressure preparation connection pipelines, and other low voltage scenarios.

规格参数			
OD	ID	bar	psi
1.6mm	0.5mm	96	1400
	0.8mm	76	1400
	1.0mm	52	750
2mm	1.0mm	62	900
	1.2mm	62	900
3mm	1.2mm	82	1200
	2.0mm	41	600
1/8"	1.6mm	69	1000
	2.1mm	41	600
6mm	4mm	45	650
1/4"	4.35mm	45	600

SPECS:

Material

FEP

Dimensions:

OD and ID, see chart

Tolerances:

OD: +/-0.02mm

ID: +/-0.02mm

Pressure rating:

According to different pipe diameters and wall thicknesses, the maximum pressure resistance is 0.7Mpa (100psi).

Operating temperature:

From -85°C to +200°C

SPECS:

Material

FEP

Dimensions:

OD and ID, see chart

Tolerances:

OD: +/-0.02mm

ID: +/-0.02mm

Pressure rating:

According to different pipe diameters and wall thicknesses, the maximum pressure resistance is 0.7Mpa (100psi).

Operating temperature:

From -85°C to +200°C

FEP OD 1/16"

Part No.	ID	Qty/pkg
RE-F1605-3M	0.5mm	3m
RE-F1605-5M	0.5mm	5m
RE-F1605-10M	0.5mm	10m
RE-F1605-25M	0.5mm	25m
RE-F1608-3M	0.8mm	3m
RE-F1608-5M	0.8mm	5m
RE-F1608-10M	0.8mm	10m
RE-F1608-25M	0.8mm	25m
RE-F1610-3M	1.0mm	3m
RE-F1610-5M	1.0mm	5m
RE-F1610-10M	1.0mm	10m
RE-F1610-25M	1.0mm	25m

FEP OD 2mm

Part No.	ID	Qty/pkg
RE-F2010-3M	1.0mm	3m
RE-F2010-5M	1.0mm	5m
RE-F2010-10M	1.0mm	10m
RE-F2010-25M	1.0mm	25m
RE-F2012-3M	1.2mm	3m
RE-F2012-5M	1.2mm	5m
RE-F2012-10M	1.2mm	10m
RE-F2012-25M	1.2mm	25m

FEP OD 3mm

Part No.	ID	Qty/pkg
RE-F3012-3M	1.2mm	3m
RE-F3012-5M	1.2mm	5m
RE-F3012-10M	1.2mm	10m
RE-F3012-25M	1.2mm	25m
RE-F3020-3M	2.0mm	3m
RE-F3020-5M	2.0mm	5m
RE-F3020-10M	2.0mm	10m
RE-F3020-25M	2.0mm	25m